

DC CONTACTOR Model: ZJ400A

ZJ400A is DC contactor with a set of bridge-type normally open main contacts, rated for maximum 400 amperes, suitable for DC power switching applications, like battery powered vehicles, telecommunication power control equipment and many other continuous DC power switching devices.



Comply to standards:

- GB14048.4-2010/IEC60947-4-1:2009 Ed.3.0.MOD
- YD/T585-2010
- GB14048.4-2020/IEC60947-4-1: 2018
- FprEN1175: 201
- ROHS

Specification:

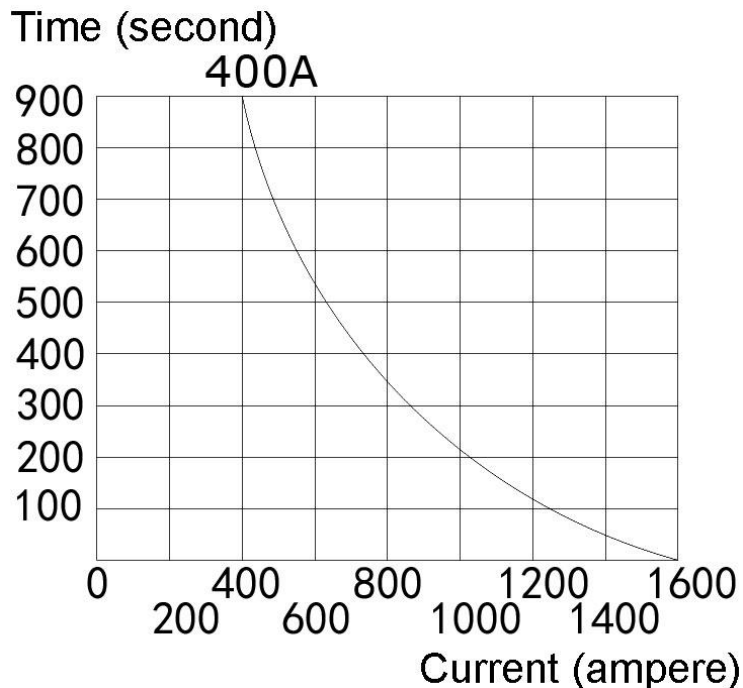
- Ambient temperature:
 - Operation: -40°C ~ +60°C
 - Stock: -40°C ~ +70°C
- Relative humidity: 95% @20°C
- Altitude range: 2000
- Shock resistance: 30m/s²
- Vibration resistance: 10 ~ 55Hz, amplitude ≤ 0.35mm
- Ingress protection: IP40
- Installation: vertically or horizontally; recommended to be installed with contacts pointing upward

Technical features:

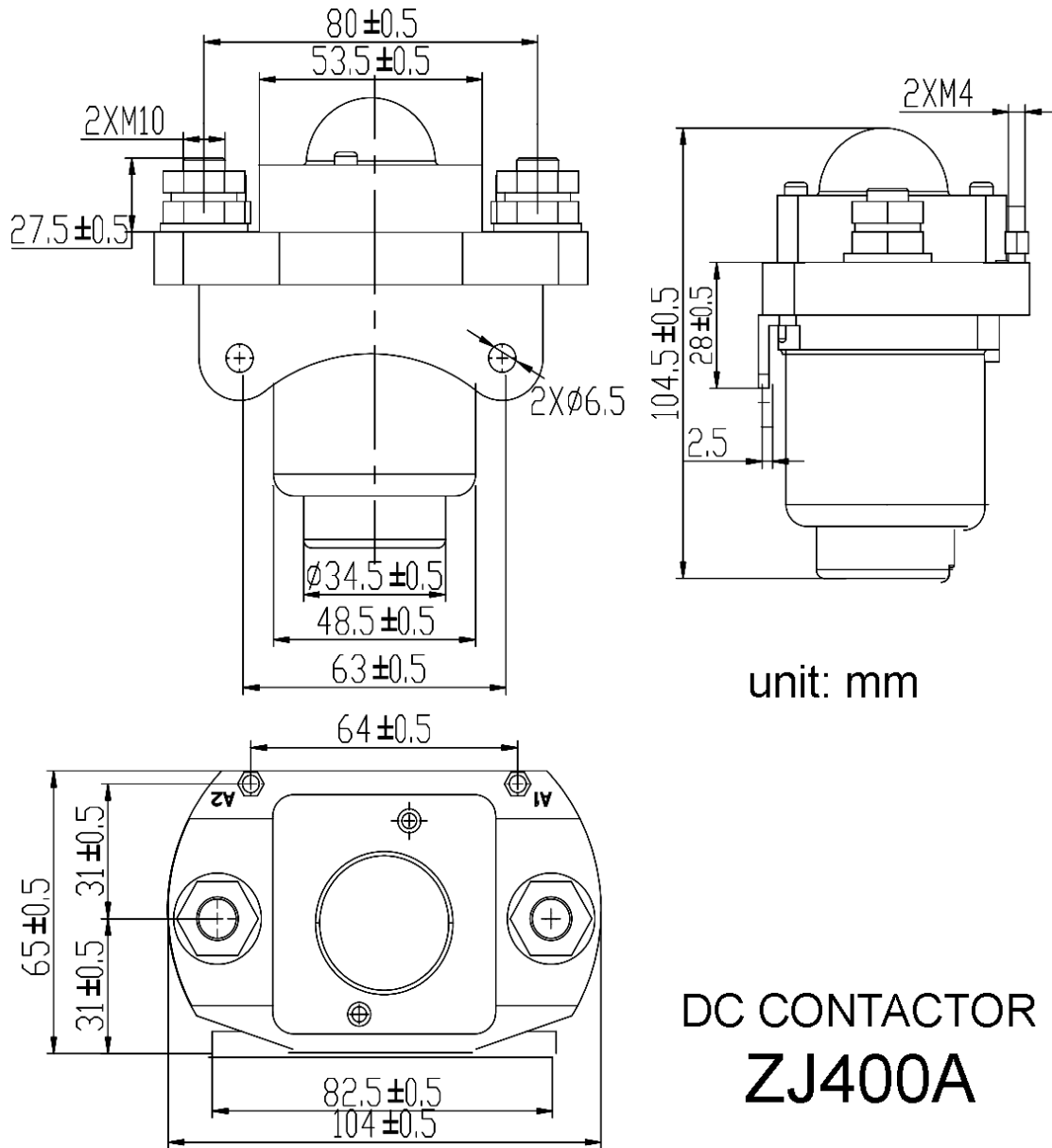
- Control coil working voltage (Ue, volt):
 - Nominal 12V DC: 10-13.5V DC
 - Nominal 24V DC: 20-26.5V DC
 - Nominal 36V DC: 30.5-40V DC
 - Nominal 48V DC: 41-53V DC
 - Nominal 60V DC: 51-66V DC
 - Nominal 72V DC: 62-80V DC
 - Continuous working voltage: ≤ 66% Ue
 - Releasing voltage: 5% ~ 40% Ue
 - Control coil power consumption (watt): ≤ 6W

- Control coil temperature: max. 160°C
- Main contacts voltage (volt):
 - Inductive load: max. 48V DC
 - Resistive load: max. 80V DC
 - Main contact temperature: max. 100°C
 - Current volt drop of main contact at 400A: Not above 80mV
- Main contacts current rating (ampere): 400A
- Operation time (@20°C, millisecond):
 - Switching ON: ≤ 40ms
 - Switching OFF: ≤ 30ms
- Insulation (body to coil & coil to main contact, mega ohm):
 - Not working: ≥ 20mΩ
 - Working (continuous load): ≥ 2mΩ
 - High humidity environment: ≥ 1mΩ
- AC power shock resistance (50Hz, current ≤ 2mA, less than 1 minute, not brokedown):
 - Coil to main contacts & body: ≥ 1000V
 - Main contacts to body: ≥ 1000V
- Life span (times):
 - Mechanical: 300,000 times
 - Electrical: 100,000 times
- Weight: 910 grams

Current-time curve:



Dimensions (unit: mm):



unit: mm

**DC CONTACTOR
ZJ400A**