



**EV100 CONTACTORS**

**Application**

EV100 contactors are designed for use in DC applications, with battery or rectified power. They perform power switching functions for traction drives as well as pump motor and other electric vehicle power switching operations. The contactors have been successfully applied to meet Underwriter's Laboratories. They are listed under U/L file number AU2422.

**Specifications**

**100 Amp Contactors**

<b>Rating / Type</b>	<b>Make and Interrupt Rating</b>			<b>Duty Cycle Rating</b>		
<b>IC4482CTTA104</b> 100A - DPDT	Make	900 Amps	12-84VDC	80 Amps	100%	Continuous
	Interrupt	900 Amps	12-84VDC	100 Amps	50%	20 Minutes
<b>IC4482CTTA100</b> 100A - SPNO	Make	900 Amps	12-84VDC	400 Amps	5%	30 Seconds
	Interrupt	900 Amps	12-84VDC	600 Amps	2%	5 Seconds

**150 Amp Contactors**

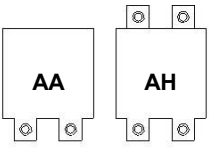
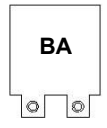
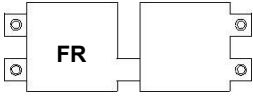
<b>Rating / Type</b>	<b>Make and Interrupt Rating</b>			<b>Duty Cycle Rating</b>		
<b>IC4482CTTA154</b> 150A - DPDT	Make	1500 Amps	12-84VDC	100 Amps	100%	Continuous
	Interrupt	1500 Amps	12-48VDC	150 Amps	50%	20 Minutes
	Interrupt	1100 Amps	72-84VDC	600 Amps	5%	30 Seconds
<b>IC4482CTTA150</b> 150A - SPNO	Make	1500 Amps	12-84VDC	900 Amps	2%	5 Seconds
	Interrupt	1500 Amps	12-48VDC			
	Interrupt	1200 Amps	72-84VDC			
<b>IC4482CTTA158</b> 150A - DPDT (HD Tips)	Make	1500 Amps	12-84VDC	900 Amps	2%	5 Seconds
	Interrupt	1500 Amps	12-48VDC			
	Interrupt	1100 Amps	72-84VDC			
<b>IC4482CTTA168</b> 150A - SPDT (HD Tips)	Make	1500 Amps	12-84VDC	900 Amps	2%	5 Seconds
	Interrupt	1500 Amps	12-48VDC			
	Interrupt	1100 Amps	72-84VDC			

**300 Amp Contactors**

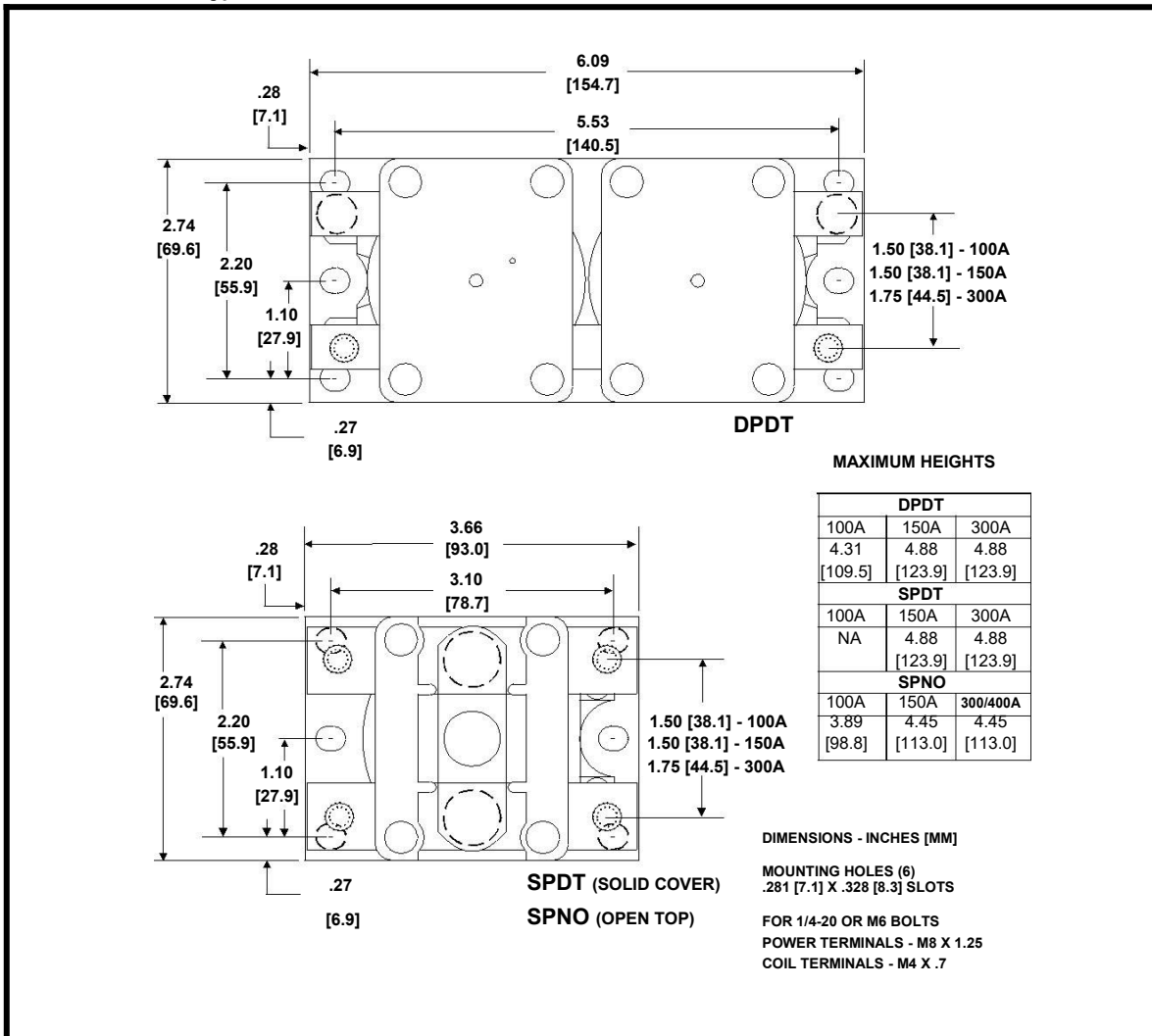
<b>Rating / Type</b>	<b>Make and Interrupt Rating</b>			<b>Duty Cycle Rating</b>		
<b>IC4482CTTA304</b> 300A - DPDT	Make	2000 Amps	12-84VDC	225 Amps	100%	Continuous
	Interrupt	2000 Amps	12-48VDC	300 Amps	50%	20 Minutes
	Interrupt	1500 Amps	72-84VDC	1200 Amps	5%	30 Seconds
<b>IC4482CTTA300</b> 300A - SPNO	Make	2000 Amps	12-84VDC	1800 Amps	2%	5 Seconds
	Interrupt	1500 Amps	12-48VDC			
	Interrupt	1500 Amps	72-84VDC			
<b>IC4482CTTA368</b> 300A - SPDT (HD Tips)	Make	2000 Amps	12-84VDC	1800 Amps	2%	5 Seconds
	Interrupt	2000 Amps	12-48VDC			
	Interrupt	1500 Amps	72-84VDC			

**400 Amp Contactors**

<b>Rating / Type</b>	<b>Make and Interrupt Rating</b>			<b>Duty Cycle Rating</b>		
<b>IC4482CTTA400</b> 400A - SPNO	Make	2000 Amps	12-84VDC	250 Amps	100%	Continuous
	Interrupt	2000 Amps	12-48VDC	400 Amps	50%	15 Minutes
	Interrupt	1500 Amps	72-84VDC	1300 Amps	5%	30 Seconds
( Note: 400 Amp uses Tin Oxide & Silver Tips)				1900 Amps	2%	5 Seconds

Typical Power Terminal Forms		Coil Number	Volts	Duty 100A	Coil Burden	
					150/300/400A	
	<b>SPNO</b>	112	12 VDC	Int.	4.9A	5.8A
		118	18VDC	Int.	3.1A	3.6A
		124	24 VDC	Int./Cont.	1.7A	1.9A
		136	36 VDC	Int.	1.0A	1.8A
		142	36 VDC	Cont.	0.8A	1.1A
	<b>SPDT</b>	142	48 VDC	Int.	1.1A	1.4A
		160	60 VDC	Int.	NA	0.8A
		176	72/80 VDC	Int.	0.6A	0.6A
		176	72 VDC	Cont.	0.5A	0.6A
		212	12 VDC	Cont.	3.3A	3.7A
	<b>DPDT</b>	218	18 VDC	Cont.	2.0A	2.4A
		224	24 VDC	Cont.	1.0A	NA
		248	48 VDC	Cont.	0.8A	0.8A
		280	80 VDC	Cont.	---	0.5A
		324	24 VDC	Cont.	---	1.9A

**Outline (For Reference Only)**



**Ordering Information**

<b>IC4482CTTA154</b>	<b>FR</b>	<b>124</b>	<b>X</b>	<b>N</b>
Type	Terminal Form	Coil Number	Interlock	Arc Shields
See Table	See Table	See Table	X - None	N - None
			A - 2NO/2NC	S - Yes